



Caledonian

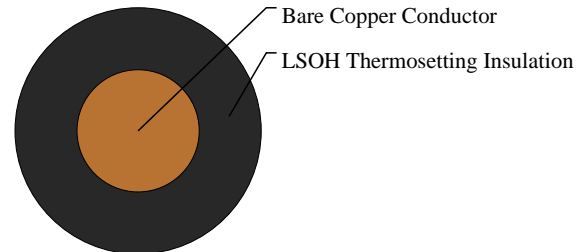
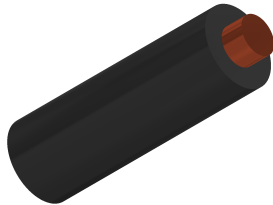
BS 7211 LSOH Sheathed Cables

www.caledonian-cables.com

marketing@caledonian-cables.com

H07Z-U

16AWG



APPLICATIONS

These cables are designed for the internal wiring of switchboards and distributor boards with an alternating nominal voltage up to 1000 Volts or a direct voltage up to 750 volts. Generally install in pipes or ducts and internal wiring of appliances with maximum operating temperature of 90° C, and generally in areas (such as public and government buildings) where smoke and toxic fumes may cause a threat to life and equipment. The cables produce no corrosive gasses when burnt which is particularly important where electronic equipment is installed.

FIRE PERFORMANCE

Flame retardant	IEC 60332-1
Smoke density	EN 50268 / IEC 61034
Corrosiveness of combustion gases	EN 50267-2-2, IEC 60754-2
Flame test: flame-retardant	EN 50265-2-1, IEC 60332-1

VOLTAGE RATING

450/750V

CABLE CONSTRUCTION

Solid bare copper

Single wire to IEC 60228 Cl-1

Cross-link polyolefin EI5 core insulation

LSOH - low smoke, zero halogen

COLOUR CODE

Green/Yellow, Black, Blue, Brown, Red, White, Yellow, Grey, Violet

Electrical Properties

Working voltage: 450/750V

Test voltage: 2500V

Flexing bending radius: 15 x Ø

Static bending radius: 10 x Ø



Caledonian

BS 7211 LSOH Sheathed Cables

www.caledonian-cables.com

marketing@caledonian-cables.com

Flexing temperature: +5° C to +90° C

Short circuit temperature: +250° C

Insulation resistance: 10 MΩ x km

DIMENSION AND PARAMETERS

No. of Cores × Cross- sectional Area	AWG Size	Nominal Insulation Thickness	Nom. Overall Diameter	Nominal Copper Weight	Approx. Weight	Min. Insulation Resistance at 90 °C
No. × mm ²		mm	mm	kg/km	kg/km	MΩ × km
1x1.5	16	0.7	2.6-3.3	14.4	20	0.011