



# Caledonian

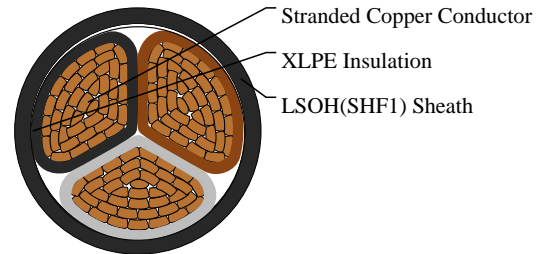
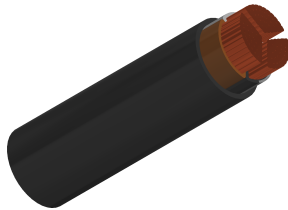
IEC60092 Offshore & Marine Cables

[www.caledonian-cables.com](http://www.caledonian-cables.com)

[marketing@caledonian-cables.com](mailto:marketing@caledonian-cables.com)

## TI/TU (MTX400) 0.6/1 kV XLPE Insulated, LSOH (SHF1) Sheathed Flame Retardant Power & Control Cables (3 Cores)

MTX400-1RZ1-R-3C50S



### APPLICATIONS

These unarmoured power & control cables are used on board of ships in all locations for fixed installations not subject to mechanical risk complying with IEC standards 60092-352. These cables are flame retardant, low smoke & halogen free.

### STANDARDS

IEC 60092-350/353/360

IEC 60332-1

IEC 60332-3-22

IEC 60754-1/2

IEC 61034

### CABLE CONSTRUCTION

Conductors: Class 2 stranded copper conductor, sector shaped. Class 5 stranded conductors can be offered upon request.

Insulation: XLPE.

Filler (optional): Halogen free filling compound

Outer Sheath: LSOH (SHF1). SHF2 can be offered upon request.

### COLOUR CODE

Three cores: Brown, Black, Grey

With yellow/green (optional)3G: Yellow/green, Blue, Brown

### PHYSICAL AND THERMAL PROPERTIES

Bending Radius for Fixed Installations: 6×OD (OD>25mm); 4×OD (OD ≤25mm)

Temperature Range: -30°C ~ +80°C

### DIMENSION AND PARAMETERS

Caledonian Cable Code	No. of Cores × Cross-sectional Area	Nominal Insulation Thickness	Nominal Sheath Thickness	Nom. Overall Diameter	Approx. Weight
-----------------------	-------------------------------------	------------------------------	--------------------------	-----------------------	----------------



# Caledonian

IEC60092 Offshore & Marine Cables

[www.caledonian-cables.com](http://www.caledonian-cables.com)

[marketing@caledonian-cables.com](mailto:marketing@caledonian-cables.com)

	No.×mm <sup>2</sup>	mm	mm	mm	kg/km
MTX400-1RZ1- R-3C50S	3×50 (sector shaped)	1.0	1.7	22.8	1530