



Caledonian

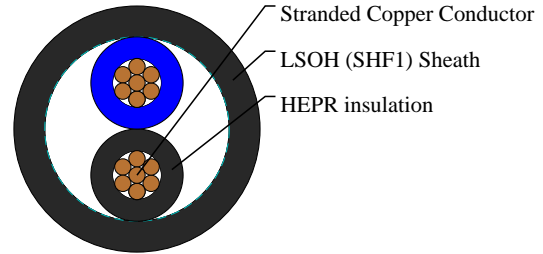
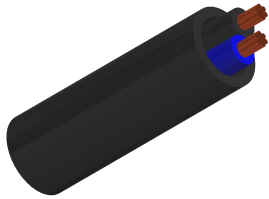
IEC60092 Offshore & Marine Cables

www.caledonian-cables.com

marketing@caledonian-cables.com

RI/RU (MTX400) 0.6/1 kV HEPR Insulated, LSOH (SHF1) Sheathed Flame Retardant Power & Control Cables (2 Cores)

MTX400-1G7Z1-R-2C1.5



APPLICATIONS

These cables are used for fixed installations on ships and offshore units in all locations. These cables are flame retardant, low smoke & halogen free.

STANDARDS

DIN 89160/98

IEC 60092-353

IEC 60332-1

IEC 60332-3-22

IEC 60754-1/2

IEC 61034

CABLE CONSTRUCTION

Conductors: Class 2 stranded copper conductor.

Insulation: HEPR.

Outer Sheath: LSOH (SHF1).

COLOUR CODE

Two cores: Black, Blue.

PHYSICAL AND THERMAL PROPERTIES

Bending Radius for Fixed Installations: 6×OD (OD>25mm); 4×OD (OD ≤25mm)

Temperature Range: -20°C ~ +75°C

DIMENSION AND PARAMETERS

Caledonian Cable Code	No. of Cores × Cross-sectional Area	Nominal Insulation Thickness	Nominal Sheath Thickness	Nom. Overall Diameter	Approx. Weight
	No. × mm ²	mm	mm	mm	kg/km



Caledonian

IEC60092 Offshore & Marine Cables

www.caledonian-cables.com

marketing@caledonian-cables.com

MTX400-1G7Z1- R-2C1.5	2X1.5	0.7	1.0	8.4	130
--------------------------	-------	-----	-----	-----	-----